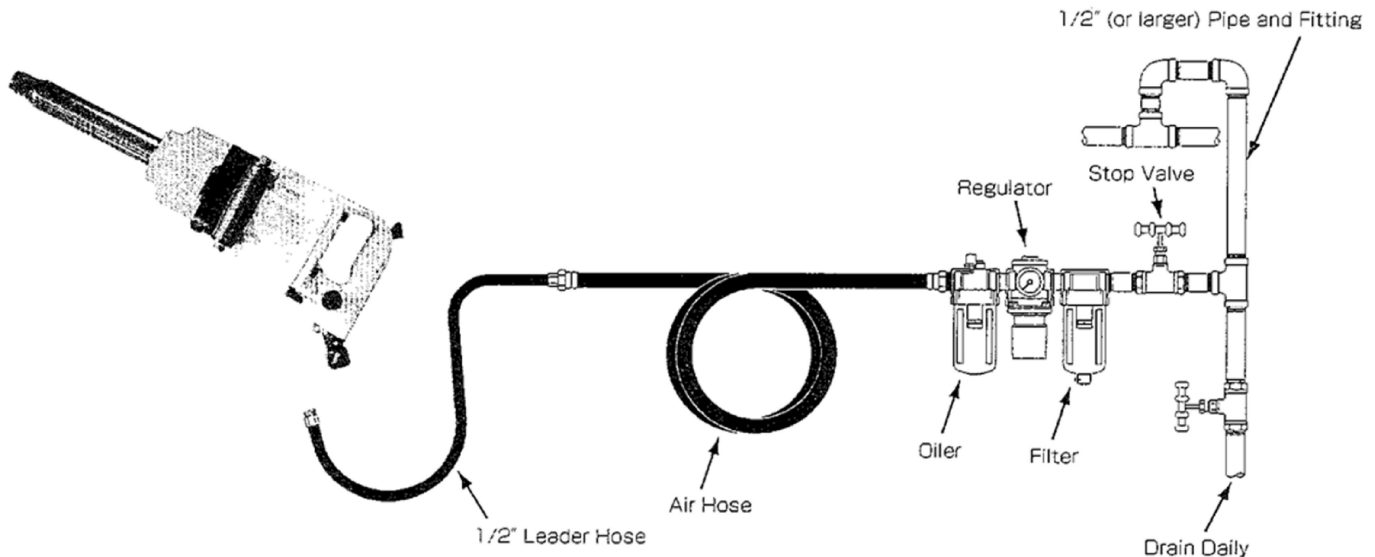


# MAINTENANCE INSTRUCTIONS 1" IMPACT WRENCH MODEL MI-42

# TOKU

TOKU PNEUMATIC PRODUCTS

## AIR HOSE AND HOSE CONNECTION:



## OPERATING INSTRUCTIONS



[www.air-allied.com.au](http://www.air-allied.com.au)

### "WARNING"

1. ALWAYS USE APPROVED EYE PROTECTION WHEN OPERATING THIS TOOL.
2. ALWAYS USE IMPACT SOCKETS IN GOOD CONDITION. SOCKETS IN BAD CONDITION REDUCE IMPACT POWER AND COULD ALSO SHATTER AND CAUSE POSSIBLE PERSONAL INJURY. NEVER USE HAND SOCKETS.
3. ALWAYS USE THE SIMPLEST HOOKUP POSSIBLE. LONG, SPRINGY EXTENSION BARS ABSORB IMPACT AND COULD BREAK LOOSE AND CAUSE POSSIBLE PERSONAL INJURY.
4. ALWAYS DIRECT EXHAUST AWAY FROM YOURSELF AND OTHERS IN THE AREA.
5. ALWAYS DISCONNECT TOOL WHEN NOT IN USE.

### LUBRICATION

To flush out gum and dirt:

1. Daily before and after each shift, pour a liberal quantity of gum solvent oil into air line.
2. Connect tool to air line. Operate tool.
3. Repeat procedure before storing.
4. Monthly, check grease in impact unit.
5. At the timing of service, check grease class and q'ty if they are in accordance with the description below.
  - Grease class : NLGI No.2 (containing molybdenum)
  - Quantity in impact unit : 10 g

### AIR SUPPLY

1. Supply tool with 0.6MPa of clean, dry air. Higher pressure drastically reduces tool life and can void warranty.
2. See diagram above for Pipe, Hose and Fitting size.
3. When using two or more tools, Air Hoses should be larger than Leader Hose.

### LOSS OF POWER/ERRATIC ACTION (possible causes)

1. Reduced compressor output.
2. Excessive drain on air line.
3. Moisture or restricted pipe, hose or fittings.
4. Improper size or poor condition of pipe, hose or fittings
5. Dirt or gum deposits cut tool power. To correct this, check and clean air strainer, then repeat lubrication procedure. (If outside conditions are in order, disassemble tool, replace worn or damaged parts, clean, assemble and lubricate.)

### REPLACEMENT PARTS

Always use GENUINE TOKU TOOLS Replacement Parts. When replacement parts are required, order by Part No. and Description in the Parts List.

### SOUND LEVEL

Sound Level dB(A) in accordance with ISO15744 : Pressure 101  
Power 112

### VIBRATIONS LEVEL

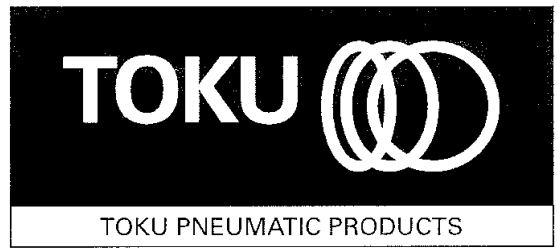
Vibration m/s<sup>2</sup> in accordance with ISO8662-7 : 9.5

No.8

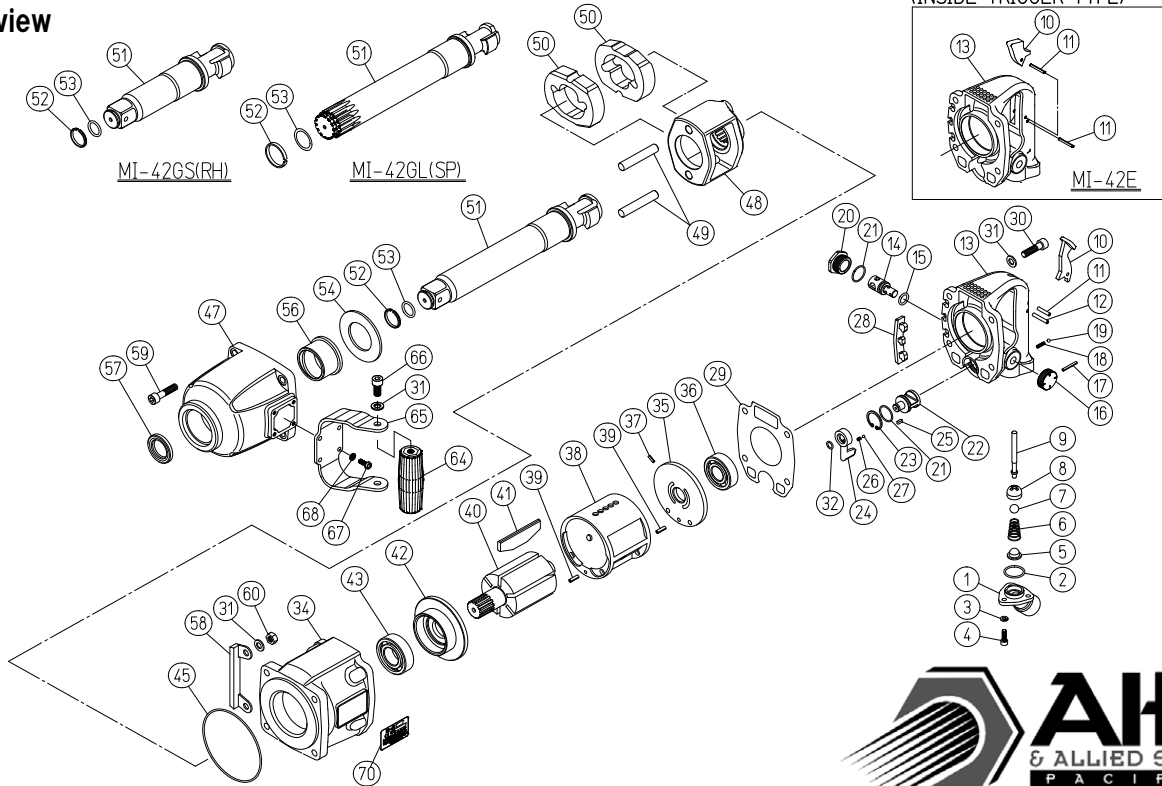
# MAINTENANCE INSTRUCTIONS

## 1" IMPACT WRENCH

# MODEL MI-42



Exploded view



### PARTS LIST MI-42GL ( RH )

Index No.	Parts No.	Description	No. Req'd
001	43-16-81-G40	Air Inlet	1
002	13-11-03-018	O-Ring S-22.4	1
003	13-13-10-005	Spring Washer M5	3
004	13-17-05-016	Hex. Socket Head Cap Screw M5 x 16	3
005	13-68-03-032	Net Screen	1
006	13-08-08-002	Throttle Valve Spring	1
007	13-05-05-028	Polyurethane Rubber Ball 7/16	1
008	13-55-05-002	Throttle Valve	1
009	13-04-05-011	Throttle Push Rod	1
010	43-16-93-130	Trigger	1
011	13-06-04-020	Spring Pin 4 x 20	1
012	13-06-04-025	Spring Pin 4 x 25	1
013	43-18-60-02B	Handle CP	1CP
014	43-18-60-150	Control Valve	1
015	13-11-01-012	O-Ring P-12	1
016	13-67-04-051	Control Valve Knob	1
017	13-06-03-024	Spring Pin 3 x 24	1
018	13-08-08-001	Spring	1
019	13-05-02-010	Steel Ball 5/32	1
020	43-12-66-270	Control Valve Cap	1
021	13-11-03-016	O-Ring S-20	2
022	43-12-66-210	Reverse Valve	1
023	13-03-01-024	Retaining Ring H-24	1
024	43-16-81-230	Reverse Valve Lever	1
025	13-04-10-381	Key	1
026	13-08-09-005	Spring	1
027	13-05-02-008	Steel Ball 1/8	1
028	13-66-06-001	Protector ( R )	1
029	13-61-04-001	Motor Housing Packing	1
030	13-17-08-030	Hex. Socket Head Cap Screw M8 x 30	4
031	13-13-09-008	Washer M8	10
032	13-11-03-006	O-Ring S-8	1
034	43-18-60-010	Motor Housing	1
035	43-12-66-370	Rear End Plate	1
036	13-01-07-005	Bearing 6204	1
037	13-06-03-010	Spring Pin 3 x 10	1
038	43-18-60-360	Liner	1
039	13-06-04-014	Spring Pin 4 x 14	2
040	43-18-60-390	Rotor	1
041	13-71-10-135	Vane	6
042	43-12-66-380	Front End Plate	1
043	13-01-09-006	Bearing 6205ZZ	1
045	13-11-03-054	O-Ring S-100	1
047	43-18-60-520	Clutch Housing	1
048	43-18-60-440	Hammer Frame	1
049	43-18-60-460	Hammer Pin	2
050	43-18-60-450	Hammer	2

[www.air-allied.com.au](http://www.air-allied.com.au)

Index No.	Parts No.	Description	No. Req'd
051	43-18-60-500	Anvil Shank L ( RH )	1
052	13-08-03-144	Socket Retainer Ring	1
053	13-11-05-013	O-Ring 6227-13	1
054	43-18-60-420	Spacer	1
056	43-16-61-530	Housing Bushing	1
057	13-12-02-048	Oil Seal VB-40525	1
058	13-62-01-015	Protector ( F )	1
059	13-17-08-035	Hex. Socket Head Cap Screw M8 x 35	4
060	13-45-01-008	U Nut M8	4
064	43-12-66-620	Grip	1
065	43-16-81-550	Dead Handle	1
066	13-19-08-016	Hex. Socket Button Head Screw M8 x 16	2
067	13-19-05-014	Hex. Socket Button Head Screw M5 x 14	4
068	13-13-10-005	Spring Washer M5	4
070	13-73-05-085	Name Plate	1
	43-18-60-50C	Anvil Shank L (RH) CP (Incl. Index No.51,52&53)	(1CP)
	43-18-60-52C	Clutch Housing CP (Incl. Index No.47,56&57)	(1CP)
	43-16-81-55C	Dead Handle CP (Incl. Index No.31,64,65&66)	(1CP)
	43-18-60-02D	Handle Assy (Incl. Index No.1,2,3,4,5,6,7,8,9,10,11,12,13,14,15,16,17,18,19,20,21,22,23,24,25,26,27&32)	(1ASSY)

#### NPT TYPE

001	43-16-51-070	Air Inlet (NPT)	1
-----	--------------	-----------------	---

#### MI-42GS( RH )

Index No.	Parts No.	Description	No. Req'd
051	43-18-61-500	Anvil Shank L ( RH )	1
052	13-08-03-144	Socket Retainer Ring	1
053	13-11-05-013	O-Ring 6227-13	1
	43-18-61-50C	Anvil Shank S (RH) CP (Incl. Index No.51,52&53)	(1CP)

#### MI-42GL( SP )

Index No.	Parts No.	Description	No. Req'd
051	43-18-62-500	Anvil Shank L ( SP )	1
052	13-08-03-145	Socket Retainer Ring	1
053	13-11-05-019	O-Ring 6227-19	1
	43-18-62-50C	Anvil Shank L (SP) CP (Incl. Index No.51,52&53)	(1CP)

#### INSIDE TRIGGER TYPE MI-42E

Index No.	Parts No.	Description	No. Req'd
010	43-12-67-130	Trigger	1
011	13-06-03-024	Spring Pin 3 x 24	2
013	43-18-64-02B	Handle CP	1CP
	43-18-64-02D	Handle Assy (Incl. Index No.1,2,3,4,5,6,7,8,9,10,11,13,14,15,16,17,18,19,20,21,22,23,24,25,26,27&32)	(1ASSY)