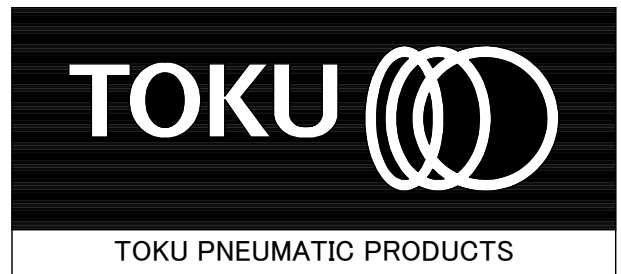


# MAINTENANCE INSTRUCTIONS

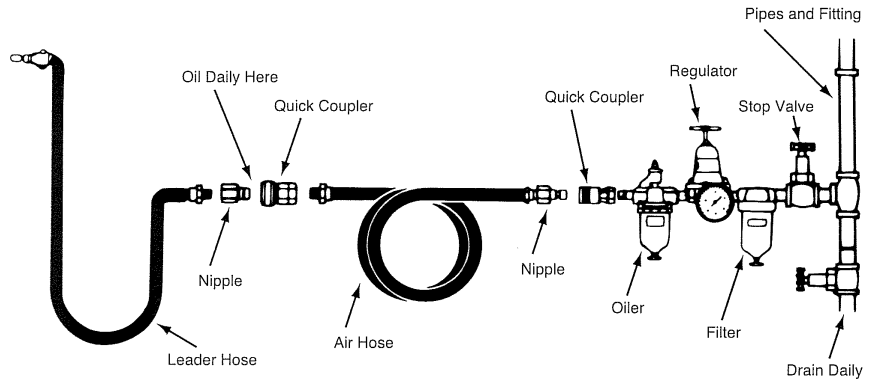
## AIR ANGLE GRINDER

# MODEL TAG - 50MLH



[www.air-allied.com.au](http://www.air-allied.com.au)

### AIR HOSE AND HOSE CONNECTION :



### OPERATING INSTRUCTIONS

#### "WARNING"

1. ALWAYS USE APPROVAED EYE PROTECTION WHEN OPERATING THIS TOOL.
2. ALWAYS DIRECT EXHAUST AWAY FROM YOURSELF AND OTHERS IN THE TOOL.
3. DAILY-BEFORE USING TOOL, WITH NO WHEEL, CHECK SPINDLE SPEED. NEVER OPERATE FASTER THAN RATED SPEED.
4. ALWAYS USE ACCESSORIES IN GOOD CONDITION RATED AT OR ABOVE SPINDLE SPEED. TIGHTEN SPINDLE ATTACHMENTS SECURELY.
5. ALWAYS USE APPROVED DUST MASK.
6. ALWAYS DISCONNECT TOOL WHEN NOT IN USE.

#### LUBRICATION

To flush out gum and dirt :

1. Daily before and after each shift, pour a liberal quantity of gum solvent oil into air line.
2. Connect tool to air line. Operate tool.
3. Repeat procedure before storing.
4. Monthly, check oil in impact unit. This tool holds approximately 1/3 oz. of SAE #30 oil.

#### AIR SUPPLY (minimum requirements)

1. Compressor/5hp, 20CFM at 90 psig (0.6MPa), 40 gal air tank.
2. ( See diagram above for Pipe, Hose and Fitting size.)
3. When using two or more hoses, all except leader hose should be 1/2" I.D. or larger.

FOR BEST OPERATION : Supply tool with 90psig(0.6MPa) of clean, dry air. Higher pressure drastically reduces tool life and can void warranty.

#### LOSS OF POWER/ERRATIC ACTION (possible causes)

1. Reduced compressor output.
2. Excessive drain on air line.
3. Moisture or restricted pipe, hose or fittings.
4. Improper size or poor condition of pipe, hose or fittings.
5. Dirt or gum deposits cut tool power. To correct this, check and clean air strainer, then repeat lubrication procedure. ( If outside conditions are in order, disassemble tool, replace worn or damaged parts, clean, assemble and lubricate. )

#### REPLACEMENT PARTS

Always use GENUINE TOKU TOOLS Replacement Parts.

When replacement parts are required, order Part No. and Description in the Parts List.

#### SOUND LEVEL

Sound Level dB(A) in accordance with ISO15744 : Pressure 88.7  
Power 99.7

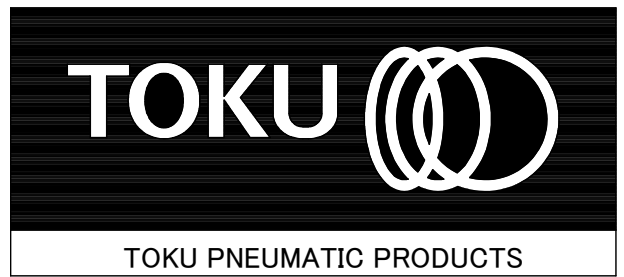
### SPECIFICATION

Type No.	Wheel Size		Max Free Speed	Height		Net Weight		Overall Length		Air Consumption		Hose Size	
	(mm)	(in)	(r.p.m)	(mm)	(in)	(kg)	(lb)	(mm)	(in)	(m <sup>3</sup> /min)	(cfm)	(mm)	(in)
TAG-50MLH	125x6x22	4- <sup>1</sup> / <sub>2</sub> x 1- <sup>1</sup> / <sub>4</sub> x 7- <sup>7</sup> / <sub>8</sub>	11,500	90	3- <sup>19</sup> / <sub>32</sub>	1.8	4.0	214	8- <sup>13</sup> / <sub>32</sub>	1	35	9.5	3/8

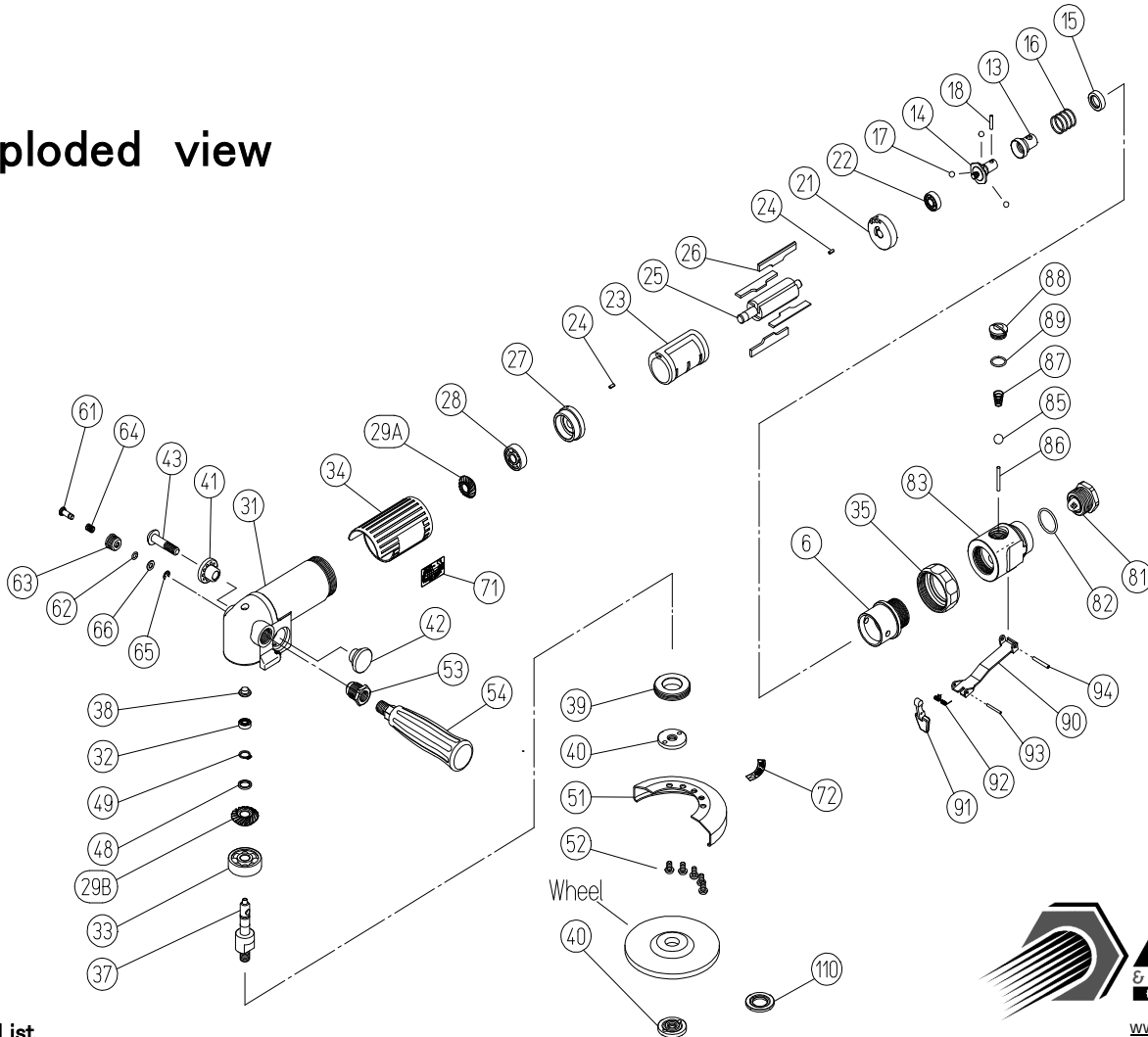
# MAINTENANCE INSTRUCTIONS

## AIR ANGLE GRINDER

# MODEL TAG - 50MLH



### Exploded view



[www.air-allied.com.au](http://www.air-allied.com.au)

### Parts List

Symbol No.	Parts No.	Q'ty Req.	Description	Symbol No.	Parts No.	Q'ty Req.	Description
006	420571A10	1	Case Cap	054	420417N20	1	Dead Handle
013	420576L60	1	Governor Valve	061	420576360	1	Stopper Pin
014	420576M00	1	Governor Body	062	131103003	1	O-Ring S-5
015	420576L30	1	Pin Stopper	063	420576370	1	Stopper Pin Cage
016	130802352	1	Spring 18X14.5X1.2	064	130802206	1	Stopper Pin Spring 6X7(0.5)
017	130502014	3	Steel Ball 7/32(5.56mm)	065	130303004	1	Retaining Ring E-Type E-4
018	130400301	1	Needle Roller 3X15.8 F	066	131309005	1	Washer M5
021	420576C80	1	Rear Plate	071	137302064	1	Name Plate
022	130103098	1	Ball Bearing 698ZZ	072	137302033	1	Wheel Cover Name Plate
023	420576D50	1	Cylinder	081	420571N5B	1	Air Inlet PT CP
024	130602106	2	Spring Pin 2.5X6	082	131103019	1	O-Ring S-24
025	420576E00	1	Rotor	083	420571C00	1	Valve Body
026	137101031	4	Vane	085	130505028	1	Rubber Ball 7/16
027	420576E80	1	Front Plate	086	130400302	1	Needle Roller 3X27.8 A
028	130103029	1	Ball Bearing 629ZZ	087	130802202	1	Valve Spring
029	420576M5C	1	Gear Kit	088	420420B40	1	Valve Cap
29A	-	1	Pinion Gear	089	131103012	1	O-Ring S-14
29B	-	1	Bevel Gear	090	420591B50	1	Lever
031	420571A00	1	Case	091	420591B60	1	Stopper
032	130103095	1	Ball Bearing 695ZZ	092	130810004	1	Coil Spring
033	130112001	1	Ball Bearing 6300ZZ	093	130602020	1	Spring Pin 2X20
034	136602014	1	Grip Rubber	094	130603022	1	Spring Pin 3X22
035	420571A50	1	Case Nut	110	420580H10	1	Wheel Ring Washer
037	420580M40	1	Bevel Gear Shaft				
038	420576N00	1	Upper Cap	Accessories	134004014	1	Combination Open Ended Spanner 14X19
039	420576G10	1	Bearing Nut	Accessories	130802147	1	Wheel Carrier Socket Bar
040	420580H00	2	Wheel Ring	Accessories	137521004	1	Oil
041	420576300	1	Muffler A				
042	420576310	1	Muffler B				
043	131908035	1	Hex.Socket Button Screw M8X35				
048	420576550	1	Washer				
049	130302010	1	Retaining Ring C-Type S-10				
051	420583U00	1	Wheel Cover				
052	132405010	5	Cross Recessed Head Screw M5X10				
053	420406A20	1	Case Bushing				