

Pitstop Tools Pty Ltd

23 Precision Street  
Salisbury QLD 4107

+61 7 2103 5955

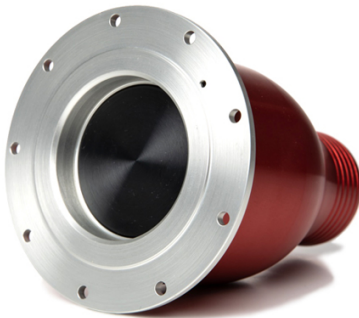
[websales@pitstoptools.com.au](mailto:websales@pitstoptools.com.au)

**PITSTOP**  
TOOLS

## REDHEAD RECEIVER, REMOTE MOUNT, 9 BOLT 2

Brand: **Red Head**

Product Code: **PP20FRMAL**



### REDHEAD RECEIVER, REMOTE MOUNT, 9 BOLT 2

2" Remote Mount FIA Female Dry Break Valve.

This female receiver (receptacle) valve mounts on your vehicle, usually taking the place of a fender-mounted filler. The anodized Billet machined aluminum body (bulb) can be clamped into 2.25 inch ID rubber hose (sold separately).

PP20 Remote Mount Receiver with 4.0 inch bolt circle diameter. 9 Hole configuration designed for #10 attachment fasteners. Flows approximately 2 gallons per second when connected to the Redhead PP20M Male Probe Push-Pull Refueling Valve (PP20M sold separately).

This product uses a new Viton seal material that is compatible with gasoline, ethanol, E85, methanol, alcohol blends (virtually every fuel except nitromethane).

User serviceable with RRK Seal Kit, gasoline and ethanol compatible.

#### Attachments

[FIA-appendix-J-252-5A](#)

[pitstoptools.com.au](http://pitstoptools.com.au)

Data contained in this document is copyright of Pitstop Tools Pty Ltd, and as such cannot be reproduced or redistributed, in part or whole, without the expressed permission of Pitstop Tools Pty Ltd. Errors and Omissions Excepted.

Generated on 12-Mar-2025 04:29 AM (Coordinated Universal Time)