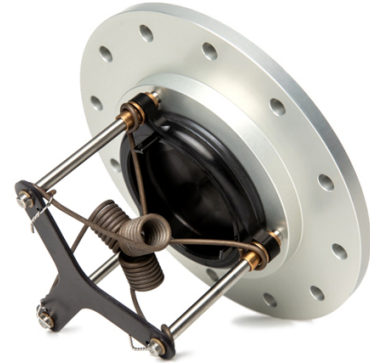


REDHEAD RECEIVER, TANK MOUNT, 12 BOLT

Brand: **Red Head**

Product Code: **PP20FTM-AT**



REDHEAD RECEIVER, TANK MOUNT, 12 BOLT

This 2" FIA Tank Mount FIA Female Dry Break Valve receiver (receptacle) valve mounts directly in the top of your fuel cell, eliminating the need for a remote feed hose (there is no provision for adding a remote feed hose).

PP20 Tank Mount Receiver with 4.0 inch bolt circle diameter. 12 Hole configuration designed for #10 attachment fasteners.

Flows approximately 2 gallons per second when connected to the Redhead PP20M Male Probe Push-Pull Refueling Valve (PP20M sold separately).

This product uses a new Viton seal material that is compatible with gasoline, ethanol, E85, methanol, alcohol blends (virtually every fuel except nitromethane).

User serviceable with RRK Seal Kit, gasoline and ethanol compatible.

Attachments

[FIA-appendix-J-252-5A](#)